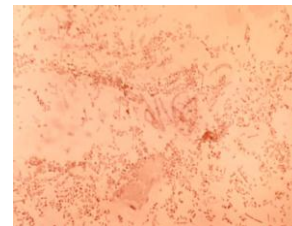


BORDETELLA PERTUSSIS AND BORDETELLA PARAPERTUSSIS

THE BACTERIUM

Bordetella pertussis and *Bordetella parapertussis* are gram negative coccobacillary.



CLINICAL MANIFESTATIONS

In the pertussis there is an incubation period (1-2 weeks), a catarrhal stage (inflammation of the mucous breathing), a period characterized by cough's paroxysms (caused by the toxin) and a decline period.

Serious complications are normally among children, and they include hypoxia, apnea, pneumonia, encephalopathy, etc.

EPIDEMIOLOGY

The pertussis is an high contagious disease, which normally damage children. Recent studies demonstrated how the infection is not just bounded in children, but it can damage even youth, adults and old people, often with atypical or soft clinical manifestations.

The transmission happens through direct contact with mucous of the breathing tract of infected people. Since the pertussis is an highly contagious disease, it's thought that up to the 90% of people, which are at strict contact to an infected person, develop the illness.

By the introduction in the 50s of the vaccination (it's just a partial protection which gradually decreases) the effect in serious cases has decreased. Anyway, young people and adults become susceptible to develop a disease when immunity decreases.

TEST

The amplification by means of PCR (for *Bordetella pertussis* in the regulatory region of the gene for the toxin and for *Bordetella parapertussis* of IS 1001) allows a highly specific dating and a good sensibility of *Bordetella parapertussis* and pertussis in clinical samples.

EXECUTION

Daily.

COST

According to the federal rate charge for *Bordetella pertussis* and *parapertussis* (3368.00x2) TP 180x2

Laboratorio
di diagnostica
molecolare

Further information or bibliographic references can be asked to the laboratory.